

Referenzen

Château Gbel'any



Beteiligung von Uponor

- ✓ Pipes were used for distribution of health equipment Uponor MLC from dimension 20 to dimension 90. With the Riser system, including fittings RS2 and RS3, for hot, cold, circulation and utility water in a total length of 2,800 m.

Reconstruction of the Gbel'ana mansion

Internal distributions of health technology - footboards and horizontal distributions from dimension 20 to 90.

A private investor renovated the Gbel'any mansion into a 4-star congress hotel with wellness. In the renovated Château Gbel'any hotel, the distribution of hot, cold, circulating and utility water was changed. Internal distributions of health technology - footboards and horizontal distributions from dimension 20 to 90.

Fakten zum Projekt

Location	Fertigstellung	
Gbelany, Slovakia	2015	
Gebäudetyp	Product systems	
Hotels & Gastronomie	Verbundrohrsysteme	
Adresse	Webseite	Art des Projekts
Hlavná 140, 013 02 Gbel'any	https://www.chateaugbelany.com/	Renovation

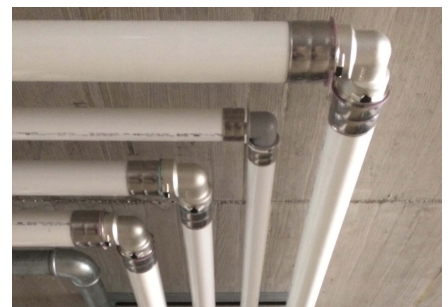
Partner

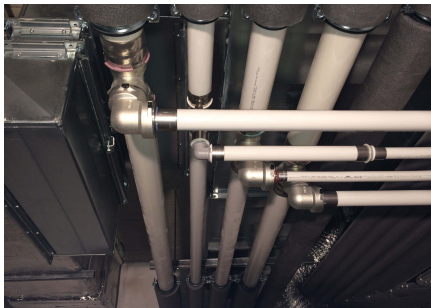
BWF sro
Tolstoy 1209/4
010 01 Žilina 1

Reconstruction of the Gbel'ana mansion into a 4-star congress hotel with wellness

During the renovation of the mansion, particular emphasis was placed on sanitary pipes that meet the requirements and guidelines for drinking water. And that's why we used our unique composite pipe system to install drinking water distribution. Uponor MLC Uni Pipe Plus, which boasts a seamless aluminum layer. This means that this composite pipe does not have a longitudinal weld and has a different composition and properties than for example Uponor PE-Xa. We deliver composite pipes in rods or coils. The advantage of this system is 100% resistance to oxygen diffusion, easy handling, low weight and, above all, high shape stability and flexibility in bending.

Château Gbel'any





uponor

Adresse

Hauptsitz:

Uponor Kamo GmbH
Heineckes Feld 9
29227 Celle

Niederlassung Ba.-Wü.:

Uponor Kamo GmbH
Max-Planck-Straße 11
89584 Ehingen/Donau

W www.uponor-kamo.de